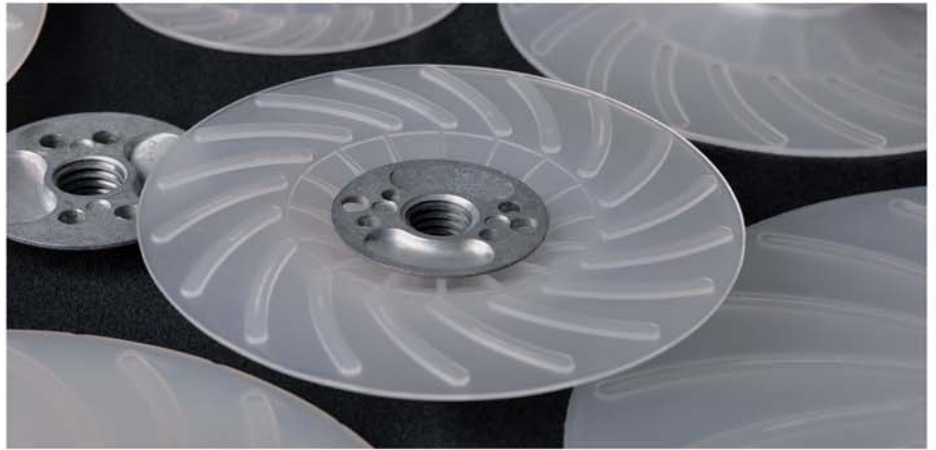


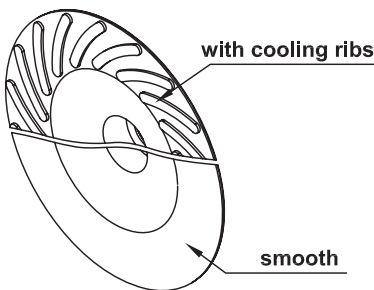
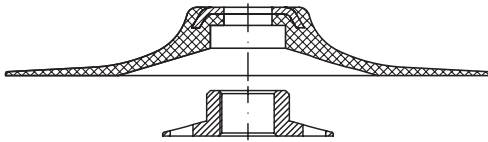
2.1 Backing pads for Resin Fibre Discs

Spiral Cool Backing pads for Resin Fibre Discs

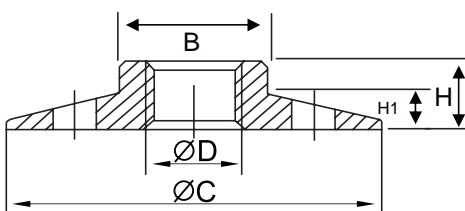


Features:

- Work with right angle grinders or polishing machines
- Pad built with spiral cooling ribs
- Metal Zinc-alloy clamping nut included
- Built of high impact-resistant material to withstand aggressive working
- Customized flexibility and color available upon request .



Clamping Nut



Item No.	Diameter	Thread	Abrasive	Flexibility	Face	Color	Max.RPM
61040-121	98mm	5/8"-11	4"	Medium	Spiral Ribs	White	15000
61040-221	98mm	M14-2	4"	Medium	Spiral Ribs	White	15000
61040-421	98mm	M10-1.5	4"	Medium	Spiral Ribs	White	15000
61045-121	108mm	5/8"-11	4.5"	Medium	Spiral Ribs	White	13000
61045-221	108mm	M14-2	4.5"	Medium	Spiral Ribs	White	13000
61050-121	123mm	5/8"-11	5"	Medium	Spiral Ribs	White	12000
61050-221	123mm	M14-2	5"	Medium	Spiral Ribs	White	12000
61060-121	148mm	5/8"-11	6"	Medium	Spiral Ribs	White	9000
61060-221	148mm	M14-2	6"	Medium	Spiral Ribs	White	9000
61070-121	172mm	5/8"-11	7"	Medium	Spiral Ribs	White	8000
61070-221	172mm	M14-2	7"	Medium	Spiral Ribs	White	8000
61080-121	218mm	5/8"-11	8"	Medium	Spiral Ribs	White	6000
61080-221	218mm	M14-2	8"	Medium	Spiral Ribs	White	6000

Item No.	Diameter	Thread	Abrasive	Flexibility	Face	Color	Max.RPM
61040-111	98mm	5/8"-11	4"	Medium	Smooth	White	15000
61040-211	98mm	M14-2	4"	Medium	Smooth	White	15000
61040-411	98mm	M10-1.5	4"	Medium	Smooth	White	15000
61045-111	108mm	5/8"-11	4.5"	Medium	Smooth	White	13000
61045-211	108mm	M14-2	4.5"	Medium	Smooth	White	13000
61050-111	123mm	5/8"-11	5"	Medium	Smooth	White	12000
61050-211	123mm	M14-2	5"	Medium	Smooth	White	12000
61060-111	148mm	5/8"-11	6"	Medium	Smooth	White	9000
61060-211	148mm	M14-2	6"	Medium	Smooth	White	9000
61070-111	172mm	5/8"-11	7"	Medium	Smooth	White	8000
61070-211	172mm	M14-2	7"	Medium	Smooth	White	8000
61080-111	218mm	5/8"-11	8"	Medium	Smooth	White	6000
61080-211	218mm	M14-2	8"	Medium	Smooth	White	6000

Item No.	C	D	H	H1	B	Material	For Pad
CN-55-5/8	55 mm	5/8"-11	10.5 mm	6 mm	22 mm	Zinc-Alloy	6"-8"
CN-55-M14	55 mm	M14-2	10.5 mm	6 mm	22 mm	Zinc-Alloy	6"-8"
CN-45-5/8	45 mm	5/8"-11	12 mm	4 mm	22 mm	Zinc-Alloy	4"-5"
CN-45-M14	45 mm	M14-2	12 mm	4 mm	22 mm	Zinc-Alloy	4"-5"
CN-45-M10	45 mm	5/8"-11	12 mm	4 mm	22 mm	Zinc-Alloy	4"-5"
CN-44L-5/8	44 mm	M14-2	9.5 mm	2mm	22 mm	Zinc-Alloy	4"-8"
CN-44L-M14	44 mm	M14-2	9.5 mm	2mm	22 mm	Zinc-Alloy	4"-8"
CN-44L-M10	44 mm	M14-2	9.5 mm	2mm	22 mm	Zinc-Alloy	4"-8"